

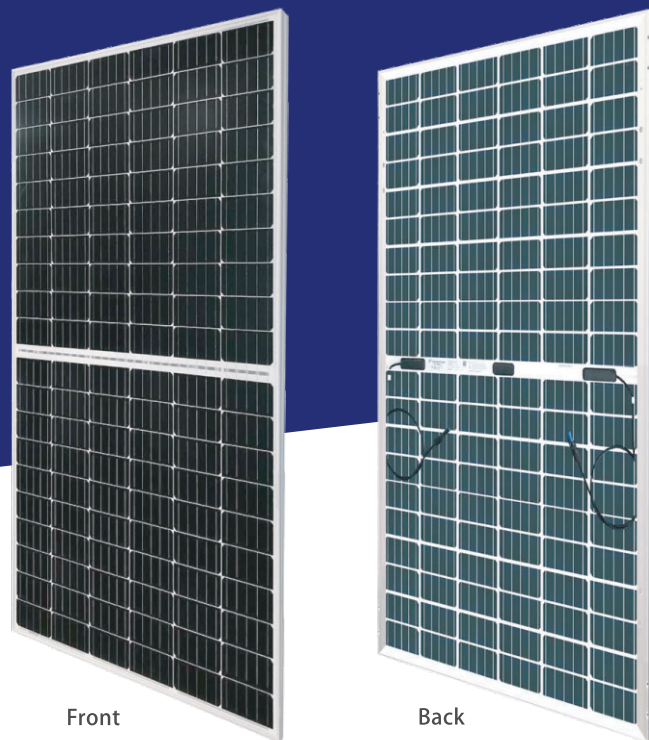
ODA400-36-MH

DIMENSIONS

2008*1002*40mm

CELL FEATURE

158.75*79.38,22.05%



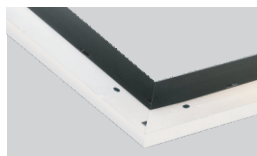
Front

Back



JUNCTION BOX

High waterproof rating
Protection Degree: IP67
Safety Class: Class II
Rated Voltage: 1500V



FRAME

Strong mechanical load resistance up to 5400 Pa
Anodic oxidation layer resistant to chemical corrosion
Available in silver and black



5BB



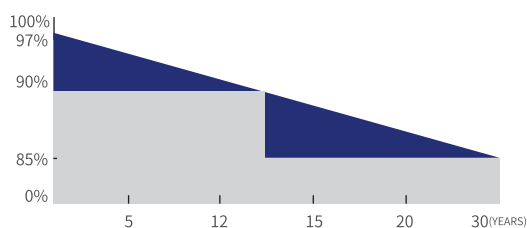
9BB

QUALIFICATIONS AND CERTIFICATES



• IEC61215 / • IEC61730

WARRANTY



12 YEARS Guarantee on product material and workmanship

30 YEARS Linear Power output warranty



Higher power output

Resistance decreases and fill factor increases, then output power increases by 5-10 watts



Longer life span

Hot spot effect is reduced and modules life span is extended.



Better durability

Perform excellently in low irradiance and other severe environment, such as salt mist, ammonia, sand blowing, etc. conditions

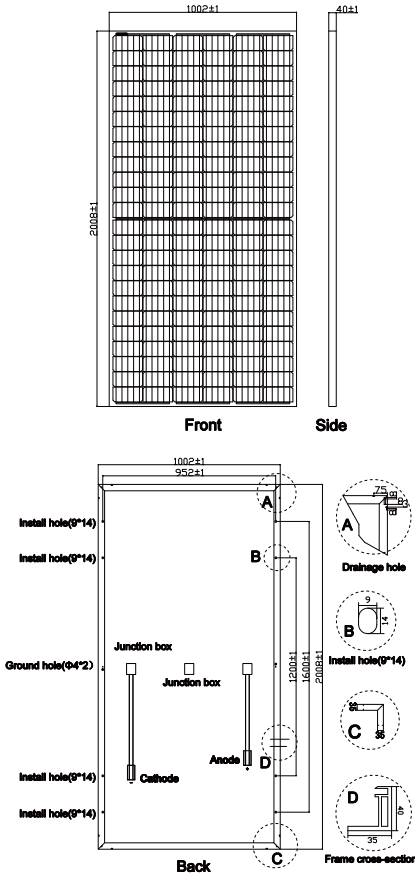


PID Resistant

Perfect resistance against PID (Potential Induced Degradation) to secure your investment.

PV DRAWINGS

Unit:mm



ELECTRICAL DATA (STC)

Model Type	ODA400-36-MH
Peak Power (Pmax)	400.00 W
Maximum Power Vp/ltage (Vmp)	40.36 V
Maximum Power Current (Imp)	9.92 A
Open Circuit Voltage (Voc)	49.44 V
Short Circuit Current (Isc)	10.45 A
Cells Efficiency (%)	22.05 %
Module Efficiency (%)	19.88 %

*STC: irradiance 1000 W/m², AM 1.5, and cell temperature of 25°C

ELECTRICAL DATA (NOCT)

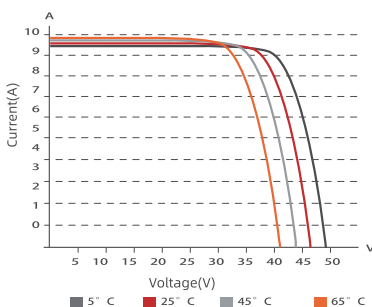
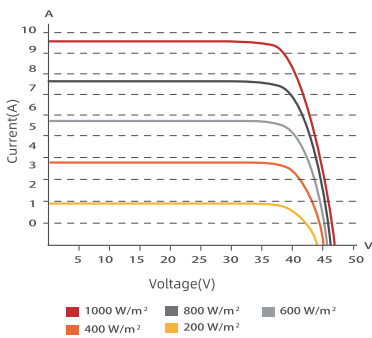
Model Type	ODA400-36-MH
Peak Power (Pmax)	297.00 W
Maximum Power Vp/ltage (Vmp)	37.73 V
Maximum Power Current (Imp)	7.88 A
Open Circuit Voltage (Voc)	46.48 V
Short Circuit Current (Isc)	8.35 A

*NOCT: irradiance 800 W/m², AM 1.5, ambient temperature 20°C, wind speed 1 m/s

TEMPERATURE & MAXIMUM RATING

Maximum System Voltage (V)	1500/1000
Maximum Series Fuse Rating (A)	20
Power Tolerance	0~+3 %
Pmax Temperature Coefficients (W/°C)	-0.360 %
Voc Temperature Coefficients (V/°C)	-0.289 %
Isc Temperature Coefficients (A/°C)	+0.051 %
NOCT Nominal Operating Cell Temperature (°C)	45±2
Operating and Storage Temperature (°C)	-40~+85

IV CURVE



MECHANICAL CHARACTERISTICS

Cell Type	158.75x79.38 MONO
No. of Cells	144 (12x12)
Dimensions	2008x1002x40mm
Weight	22.80kg
Front Glass	3.2mm high transmission, low iron, tempered glass
Frame	Anodized Aluminium Alloy
Junction box	IP68 3 diodes
Output cables	4mm ² cable 90cm+mc4
MaxWind Load/Snow Load	2400Pa/5400Pa

PACKING WAY

20FT container	12 Packages/292pcs
40HQ containe	22 Packages/660pcs



+ 55 19. 3533.7755 | [in](#) [f](#) [@](#) cpm7solution

www.cpm7solution.com.br | contato@cpm7solution.com.br

Office Tower, Av. 03, n° 1701, sala 1302, Jd. Claret, Rio Claro - CEP: 13503-251